

LIFECYCLE EXTENSION GUIDE



Contents

Table of Contents

Important Safety Notice	3
1. Exploded Diagram	4
2. Wiring connectivity diagram	7
3. Mechanical Instruction	8
4. Assembly and Disassembly SOP	9
5. FW Upgrade SOP	15
6. Troubleshooting	18
7. FRU List	21

Safety Notice

Any person attempting to service this chassis must familiarize with the chassis and be aware of the necessary safety precautions to be used when serving electronic equipment containing high voltage



Important Safety Notice

Product Announcement:

This product is certificated to meet RoHS Directive and Lead-Free produced definition. Using approved critical components only is recommended when the situation to replace defective parts. Vender assumes no liability express or implied, arising out of any unauthorized modification of design or replacing non-RoHS parts. Service providers assume all liability.

Qualified Repairability:

Proper service and repair is important to the safe, reliable operation of all series products. The service providers recommended by vender should being aware of notices listed in this service manual in order to minimize the risk of personal injury when perform service procedures. Furthermore, the possible existed improper repairing method may damage equipment or products. It is recommended that service engineers should have repairing knowledge, experience, as well as appropriate product training per new model before performing the service procedures.

NOTICE:

! To avoid electrical shocks, the products should be connect to an authorized power cord, and turn off the master power switch each time before removing the AC power cord.

! To prevent the product away from water or exposed in extremely high humidity environment.

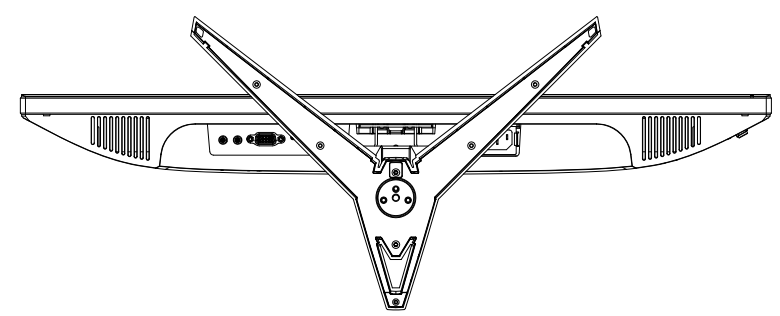
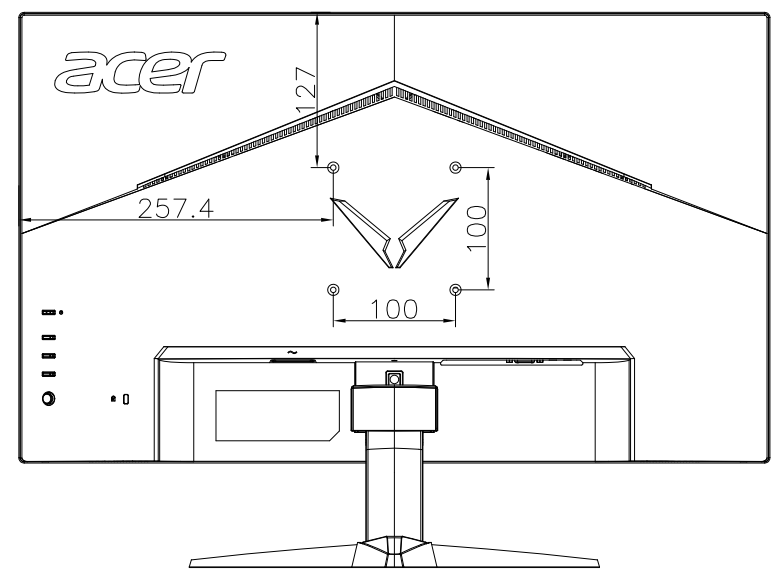
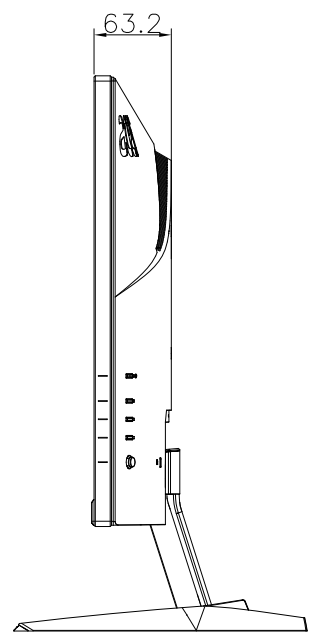
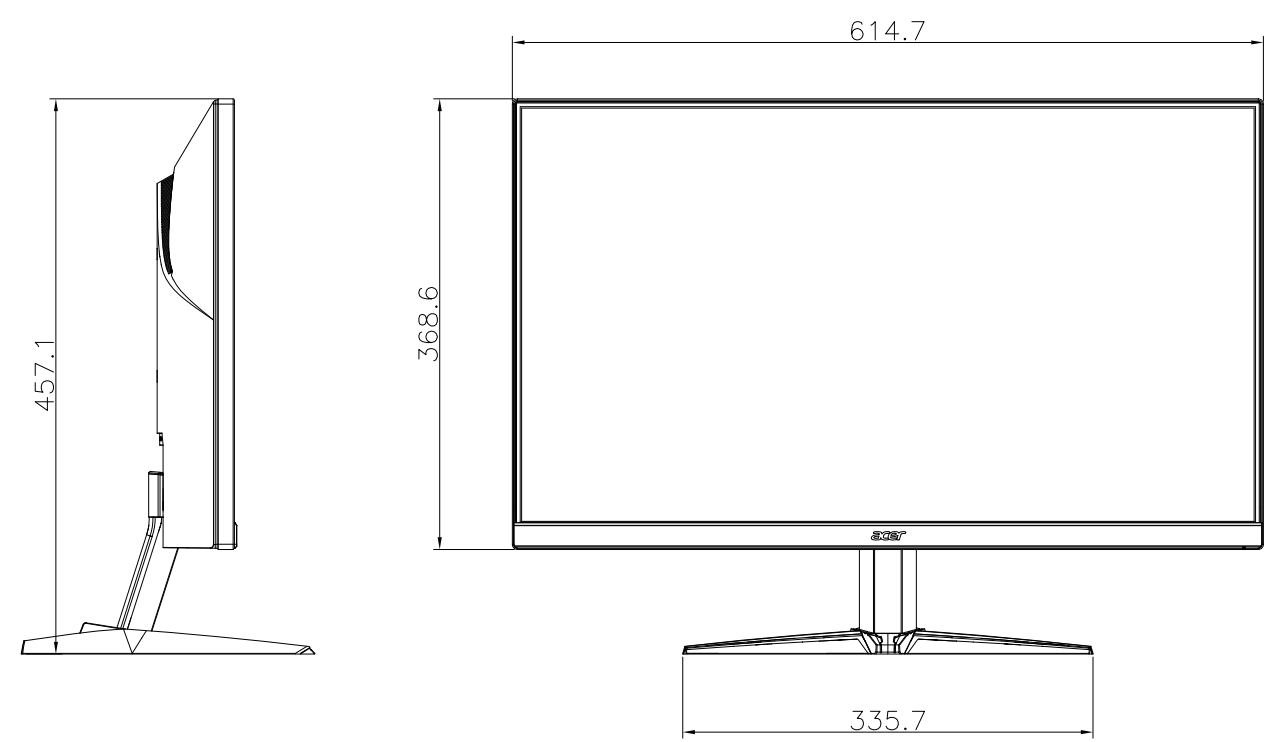
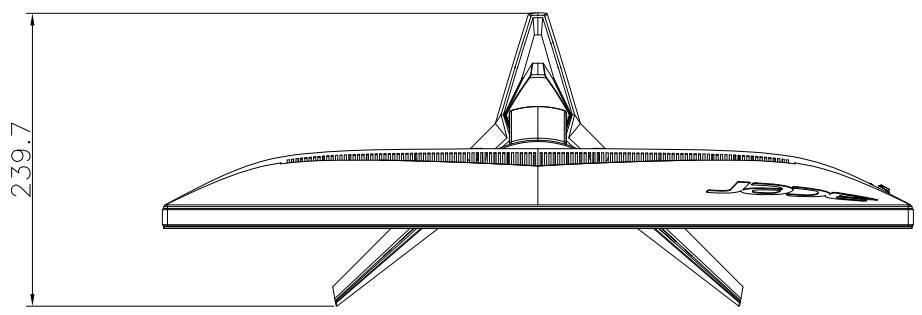
! To ensure the continued reliability of this product, use only original manufacturer's specified parts.

! To ensure following safety repairing behavior, put the replaced part on the components side of PWBA, not solder side.

! To ensure using a proper screwdriver, follow the torque and force listed in assembly and disassembly procedures to screw and unscrew screws.

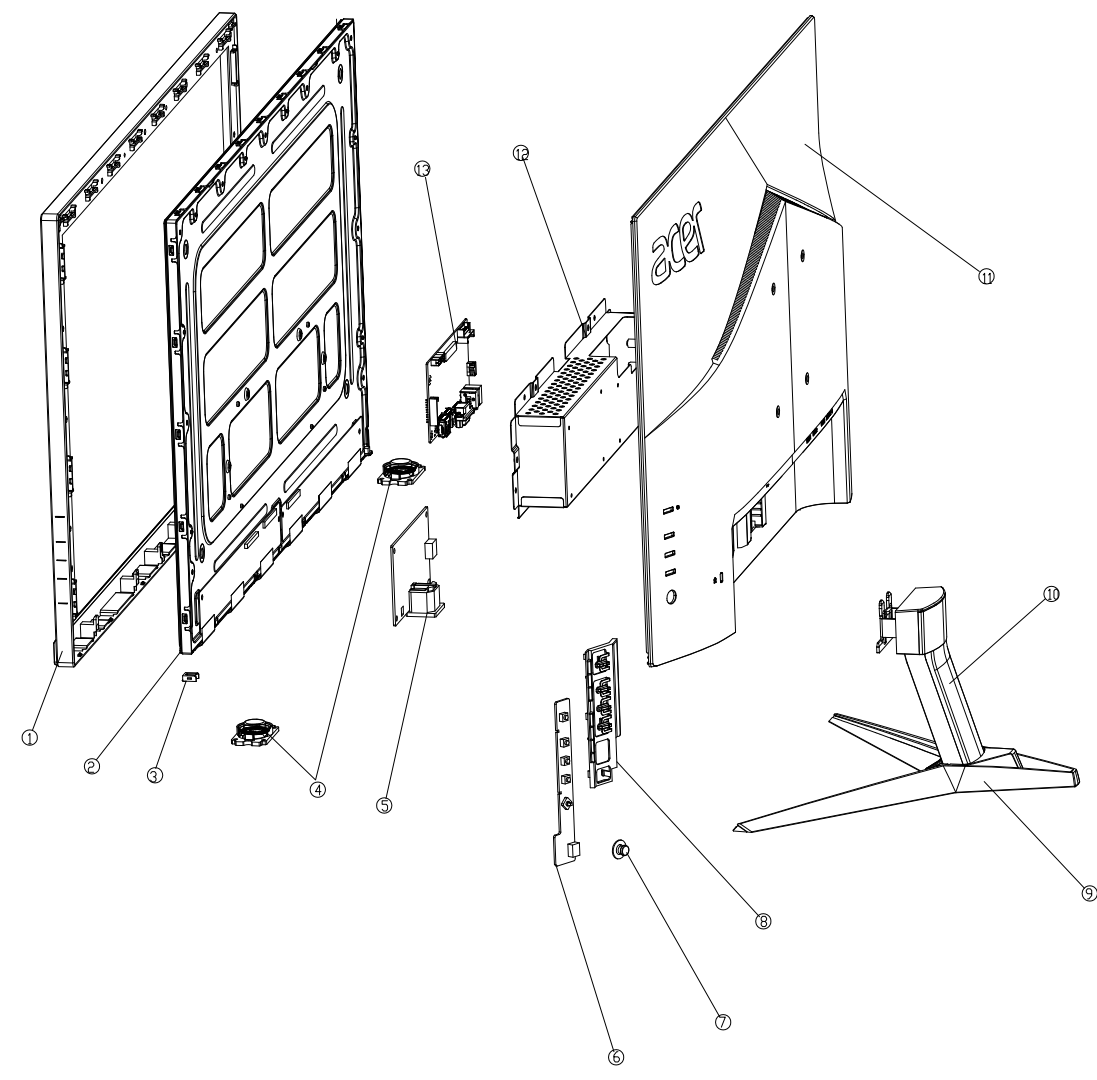
! Using Lead-Free solder to well mounted the parts.

! The fusion point of Lead-Free solder requested in the degree of 220°C.



Weight		
Model	Net Weight W/O packaging(kg.)	Gross Weight with packaging(kg.)
QG271	5.1	5.7

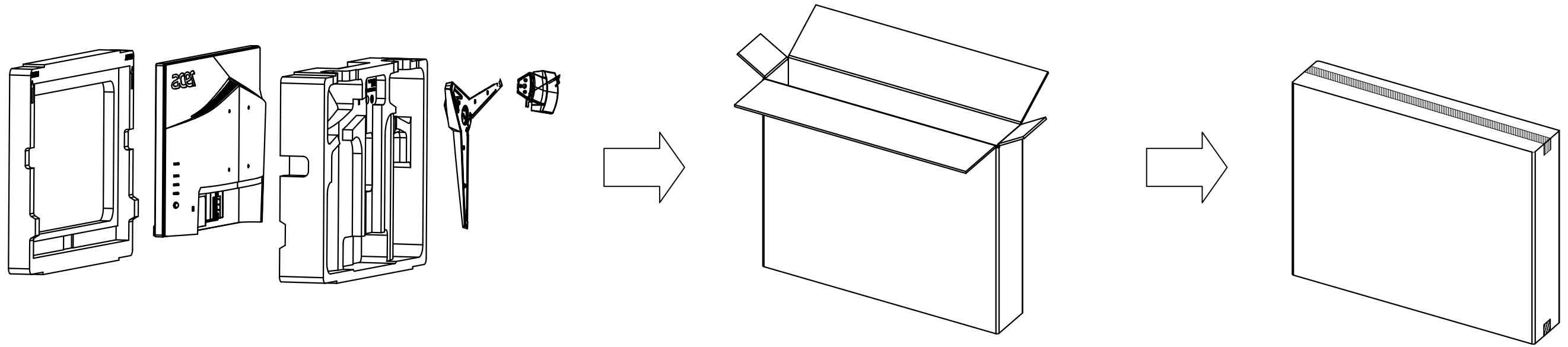
REV	DC/EC NUMBER	DESCRIPTION	DATE
V1.0		Initial version release	2019.09.30



No.	Description.	Code No.	Material	Qty's	Remark
				1	
				1	
				1	
				1	
				1	
13	Main PCB			1	
12	PCB Cover			1	
11	Back Cover			1	
10	Stand support			1	
9	Stand base			1	
8	key			1	
7	switch key			1	
6	Key PCB			1	
5	power PCB			1	
4	Horn			2	
3	Lens			1	
2	Module			1	
1	Cabinet			1	

PART NUMBER		APPROVED	DATE
PART DESCRIPTION		CHECKED	DATE
EXPLODE-DRAWING		DESIGNED	DATE
MODEL NAME			2019-09-30
UNIT	SCALE	PROJECT	SIZE SHEET NUMBER REVISION
MM	1:1		A4 1 OF 1 V1.0

REV	DC/EC NUMBER	DESCRIPTION	DATE
01		首版发行	2020.01.01



NO.		GENERAL LINEAR TOLERANCE			SELECT LEVEL
		STEP	1	2	
1	所有尺寸	0~25	0.05	0.1	0.2
		25~100	0.1	0.15	0.2
		100~200	0.15	0.2	0.4
		200~400	0.2	0.3	0.6
		400~700	0.3	0.4	1.0
		700~1000	0.4	0.4	1.2
		1000~	0.5	0.6	1.5
		ANGLE 90°	±0.5°	±1.0°	±1.5°

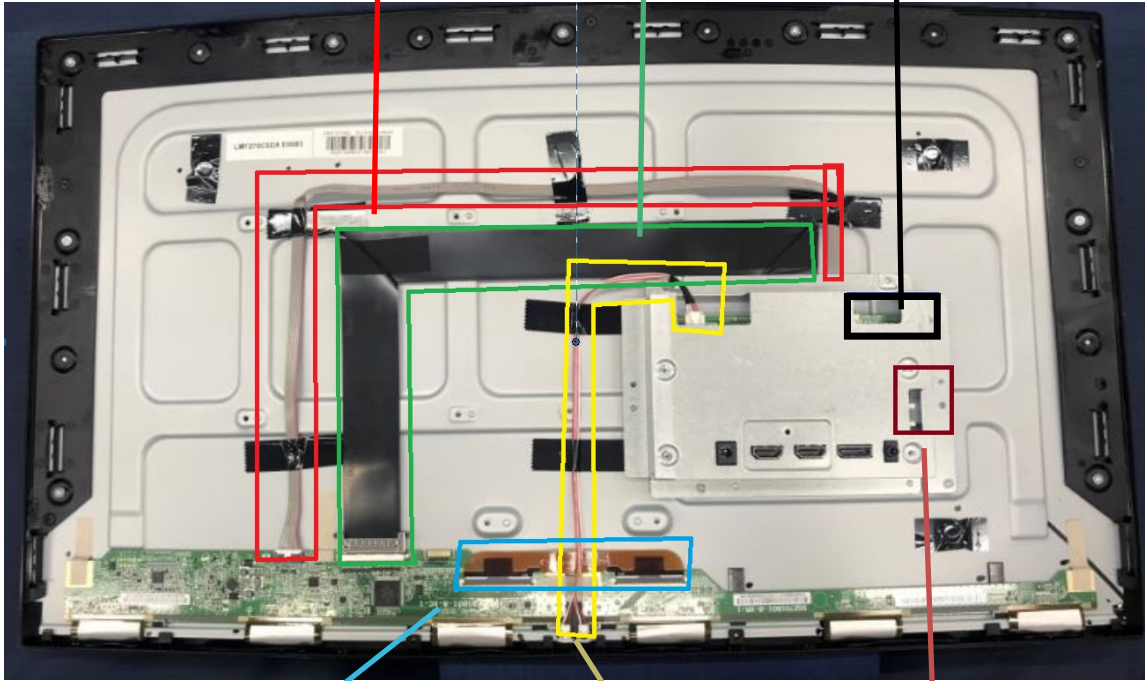
UNIT		SCALE	PROJECT	SIZE	SHEET NUMBER	REVISION
MM	1:1	A4		1 OF 1	V1.0	

2. Wiring connectivity diagram

Power supply wire for screen

Connect the main board and screen FFC wire

Connect the horn wire



FFC wire

light bar power supply wire

Connect the key board wire

3. Mechanical Instruction

Tools Required

List the type and size of the tools that would typically can be used to disassemble the product to a point where components and materials requiring selective treatment can be removed.

Tool Description:

- working table
- Screw-driver
- Knife
- glove
- cleaning cloth
- ESD protection

4. Assembly and Disassembly SOP

4.1 Disassembly Procedures

Preparation before disassemble

1. Clean the room for disassemble
2. Identify the area for monitor
3. Check the position that the monitors be placed and the quantity of the monitor ;prepare the area for material flow; according to the actual condition plan the disassemble layout
4. Prepare the implement, equipment, materials as bellow:
 - 1) working table
 - 2) Screw-driver
 - 3) knife
 - 4) glove
 - 5) cleaning cloth
 - 6) ESD protection

S1

Prepare the worktable and remove the screws of the backcover

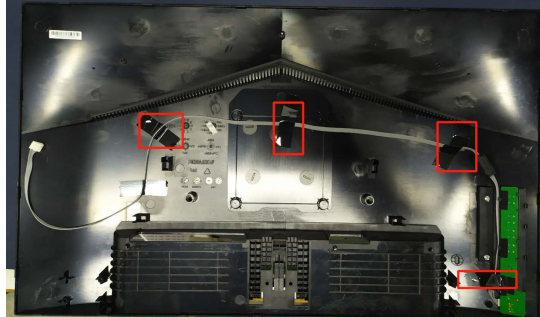
**S2**

Disassemble the backcover and disassemble the key connector.



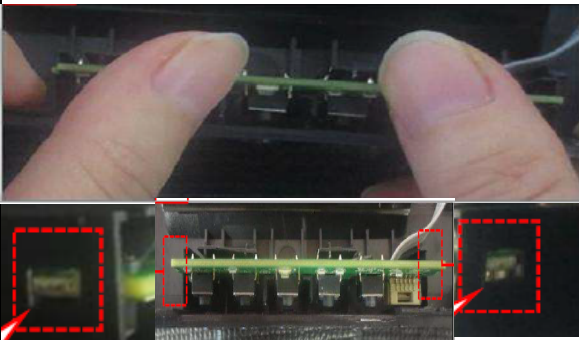
S3

Disassemble the tapes and speakers screws

**S4**

Disassemble the key IRLens components

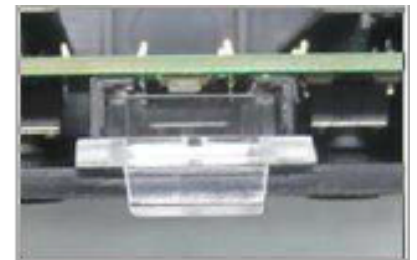
PICTURE 1



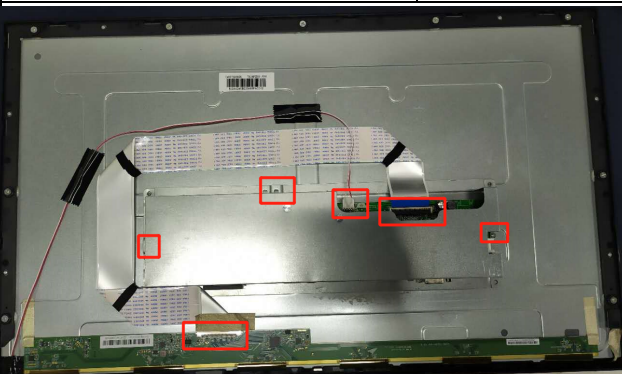
PICTURE 2



PICTURE 3

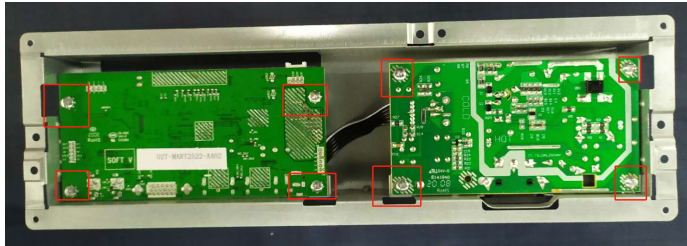
**S5**

Disassemble the connected lines.



S6

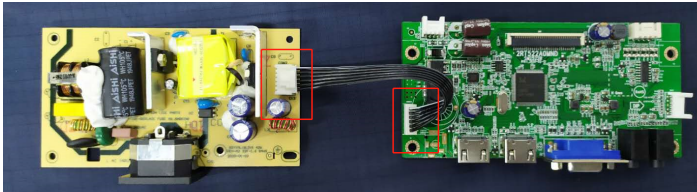
Remove the mainboard

**S7**

Remove the main board components

PICTURE 1

PICTURE 2

**S8**

You will see the module

**NOTE:**

Circuit boards >10 cm² has been highlighted with the yellow rectangle as above image shows. Please detach the Circuit boards and follow local regulations for disposal.

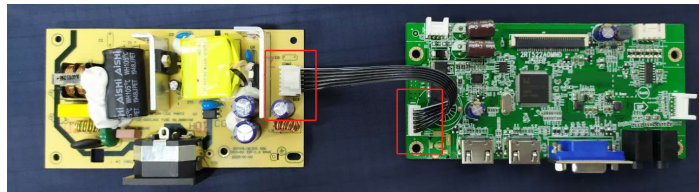
4.2 Assembly Procedures

Preparation before assemble:

1. Clean the room for work
2. Identify the area for material
3. Prepare the implement, equipment, materials as bellow:
 - 1) working table
 - 2) Screw-driver
 - 3) Knife
 - 4) glove
 - 5) cleaning cloth
 - 6) ESD protection

S1

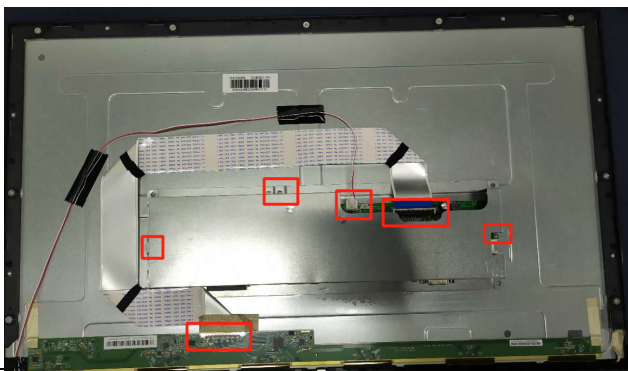
Insert connect lines, put the module on the worktable. Install the main board to the bracket



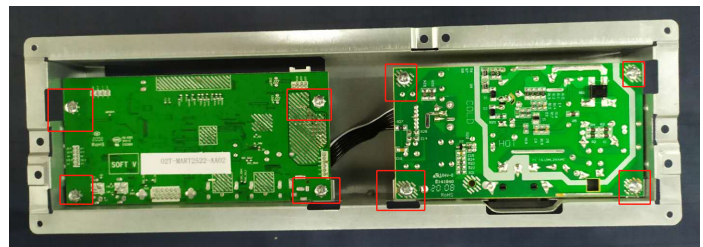
S2

Take the Panel on the sponge cushion.

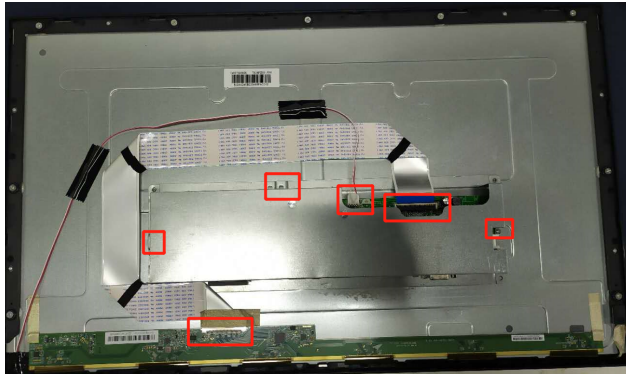
PICTURE 1



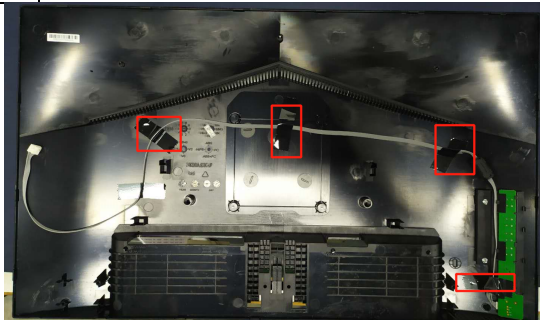
PICTURE 2



<p>S3</p>	<p>Insert connect lines and check</p>
------------------	---------------------------------------

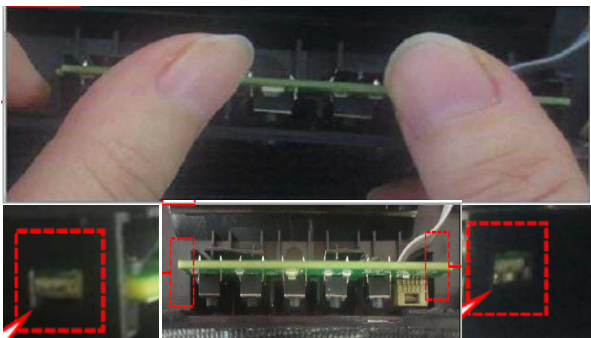


<p>S4</p>	<p>Install speakers screws and paste the black tapes</p>
------------------	--



<p>S5</p>	<p>Process and install key IRand lenscomponents.</p>
------------------	--

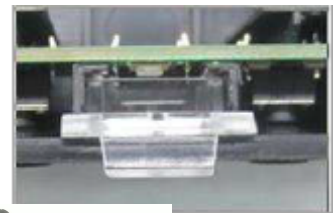
PICTURE 1



PICTURE 2



PICTURE 3

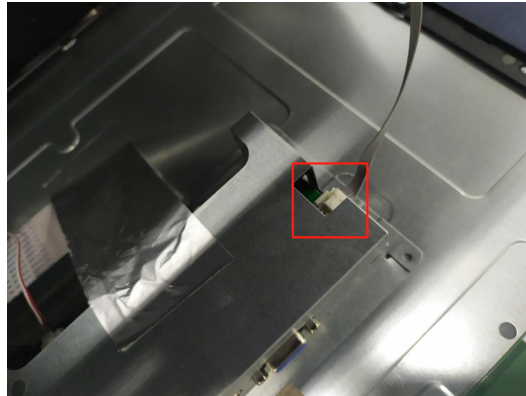


S6

Place the rear housing on the module without fastening

**S7**

Insert the key IR and speaker lines. Install the rear housing to the module and fix it with the lock screw

**S8**

Check the appearance





HDMI line



HDMI line



FW Upgrade SOP

1. Unzip the RTDCustomerTool_V3.9Beta4.rar



- Comm
- DefaultDebugMsgFile
- PlugIn
- RTDScaler
- Comm.dll
- RSGrid.ocx
- RTDTool.exe**

2. Run the RTDTool.exe

Follow the prompt steps to install the TRDTool

3. FW Upgrade Process

The screenshot shows the RTD Customer Tool V3.9 Beta4 interface. Key elements are highlighted as follows:

- Step up1:** A red box around the 'Communication Option' menu.
- Step up2:** A red box around the 'USB' icon at the bottom of the window.
- Step up3:** A red box around the 'ISP' icon in the left sidebar.
- Step up4:** A red box around the '0' in the 'Bank' column of the file list.
- Step up5:** A red box around the 'Refresh' button in the file list.
- Step up6:** A red box around the lightning bolt icon in the bottom right area.

Bank	Path	Last modified time	CRC	Len	Refresh
0	C:\Users\huixiong.yang\Desktop\新建文件夹\V8-RT795AC-D04V008.bin	2020/12/25 09:14:47	69	65536	...
1	C:\Users\huixiong.yang\Desktop\新建文件夹\V8-RT795AC-D04V008.bin		8F	65536	...
2	C:\Users\huixiong.yang\Desktop\新建文件夹\V8-RT795AC-D04V008.bin		9E	65536	...
3	C:\Users\huixiong.yang\Desktop\新建文件夹\V8-RT795AC-D04V008.bin		56	65536	...
4	C:\Users\huixiong.yang\Desktop\新建文件夹\V8-RT795AC-D04V008.bin		83	65536	...
5	C:\Users\huixiong.yang\Desktop\新建文件夹\V8-RT795AC-D04V008.bin		21	65536	...
6	C:\Users\huixiong.yang\Desktop\新建文件夹\V8-RT795AC-D04V008.bin		75	65536	...
7	C:\Users\huixiong.yang\Desktop\新建文件夹\V8-RT795AC-D04V008.bin		F0	65536	...

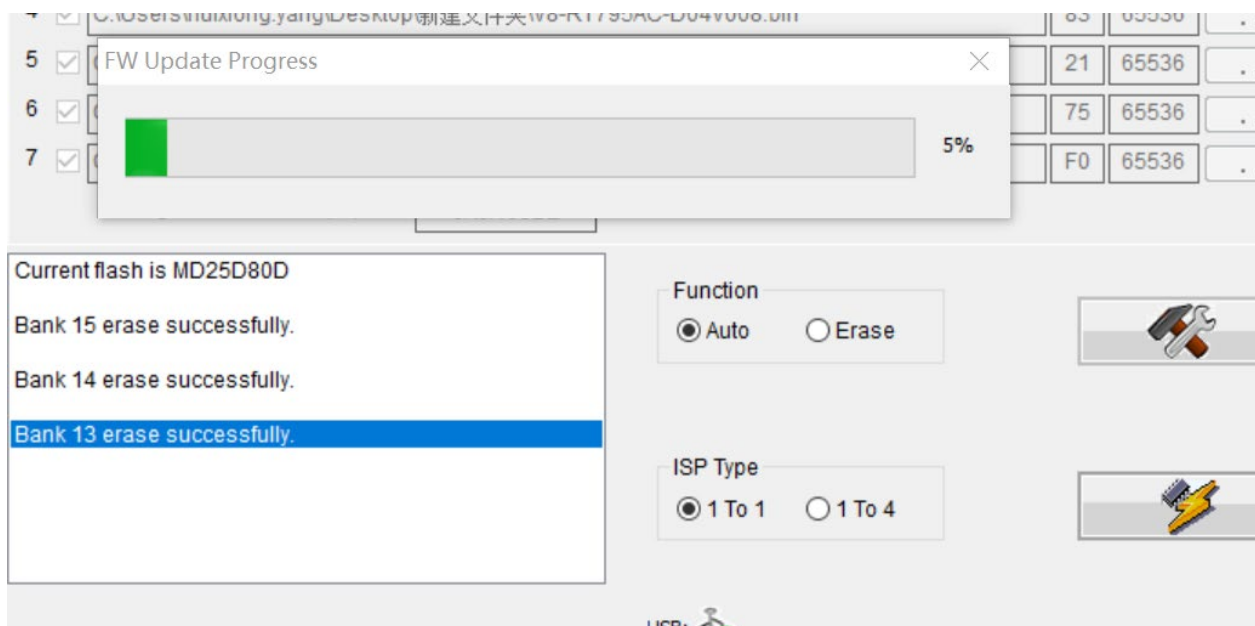
Big Bin CheckSum(0x): 0A6A 66BE

Function: Auto Erase

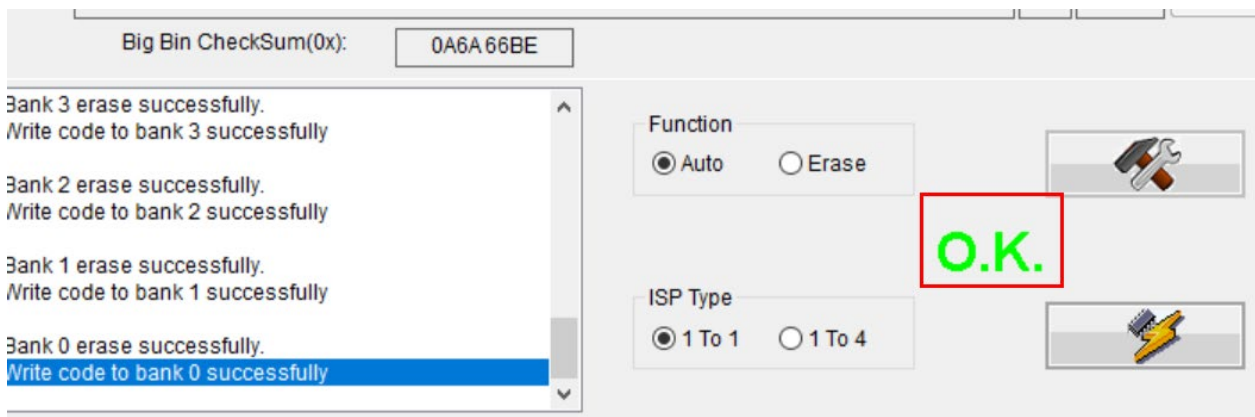
ISP Type: 1 To 1 1 To 4

- Note that the monitor needs to be powered on before upgrading;;
- Setp up1: Choose Access method as RealtekUSB
- Step up2: Confirm that the USB upgrade board is connected to OK;
- Setp up3: Double-click to select the ISP column;
- Step up4: Check the first line 0 and place the box;
- Step up5: Click to select and import the bin file path of the software to be upgraded;
- Setp up6: Click to start;

Start the upgrade process



Upgrade OK prompt



3. Check FW Version and precautions through Factory Menu

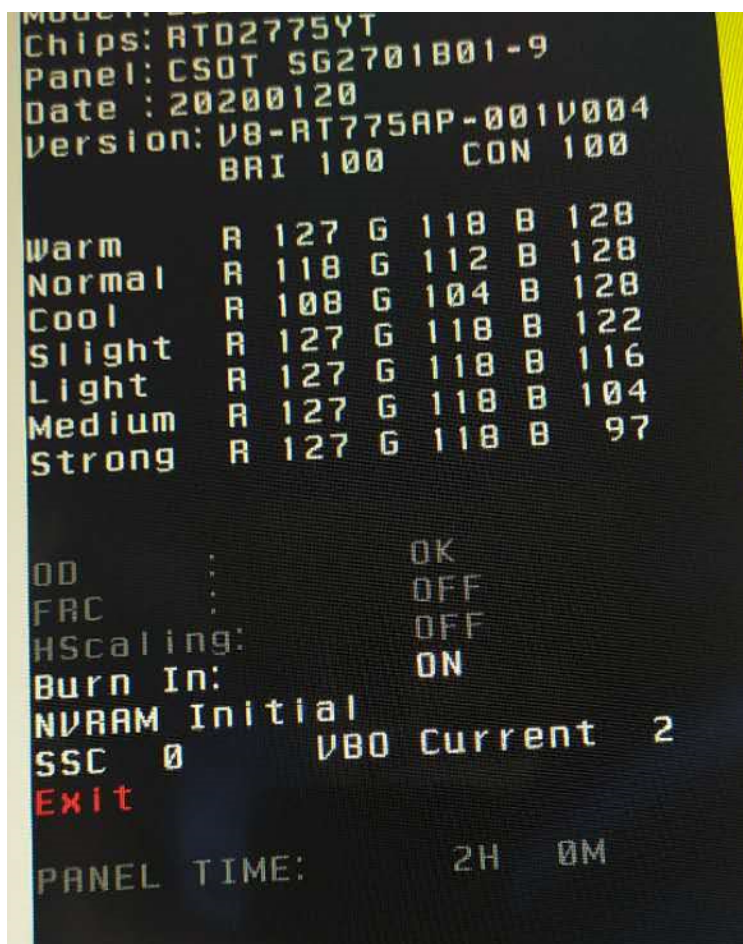
1. Enter factory mode

We have 2 different way can enter to Factory mode, shown as below:

The first way: after the burning software is completed, it defaults to the power on state and will automatically enter the factory mode, At the same time, it also enters the aging mode. At this time, if there is no signal input, it starts to age and the soft shutdown exits.

The second way: when the display is powered on and off, press the menu key all the time and power up at the same time

Until the display is normal, enter factory mode and aging mode at the same time, At this time, if there is no signal input, aging will start, and soft shutdown will exit aging and exit factory mode.



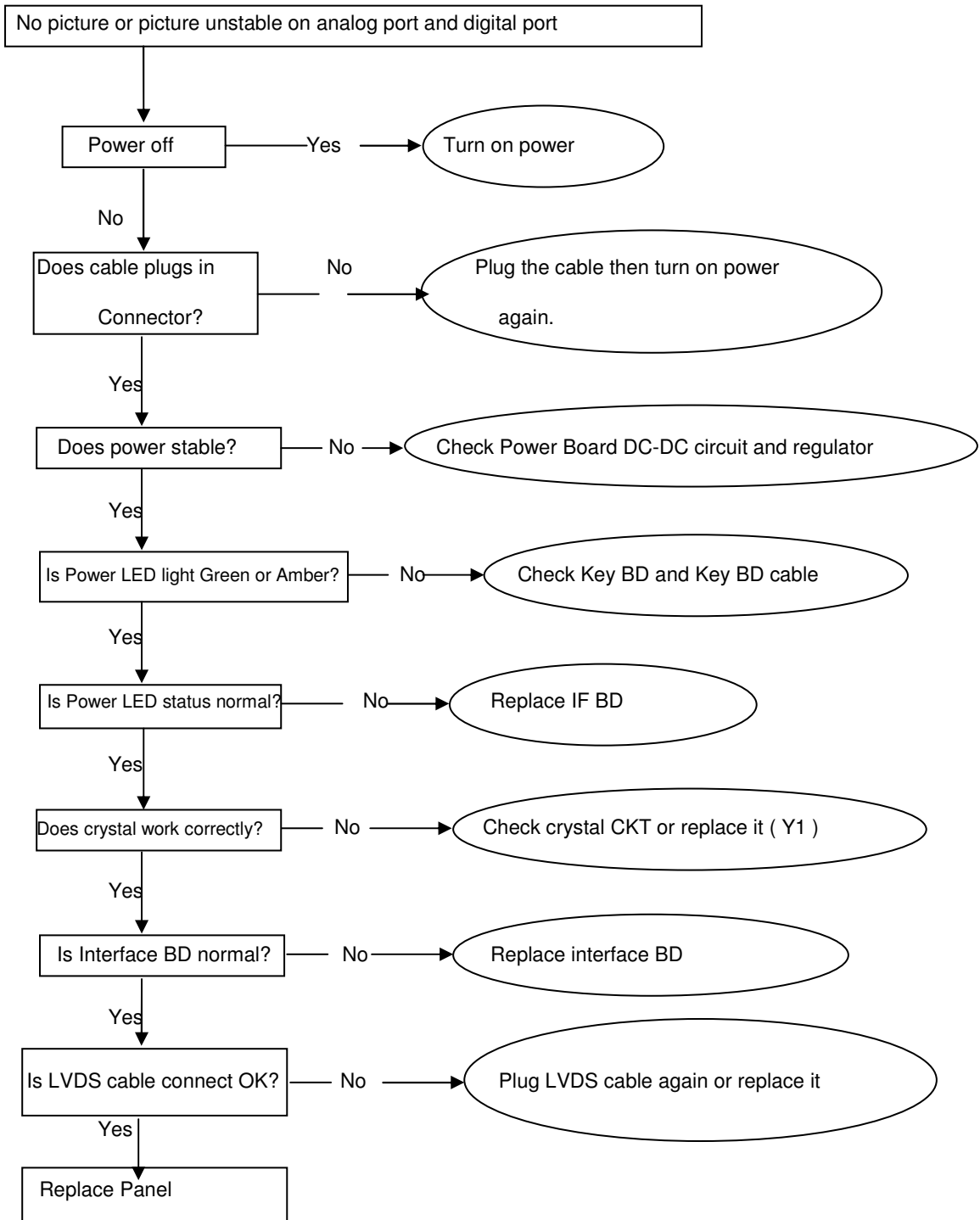
2. Exit factory menu mode press the key left and right keys to select "exit", and then press the key to exit; ➤

Key function description: key ➤ is confirm key, key ⏪ ⏩ selection or adjustment, Key ⏪ has no function, key ⏻ is power key (long press for 3S to shut down, power on and press once).

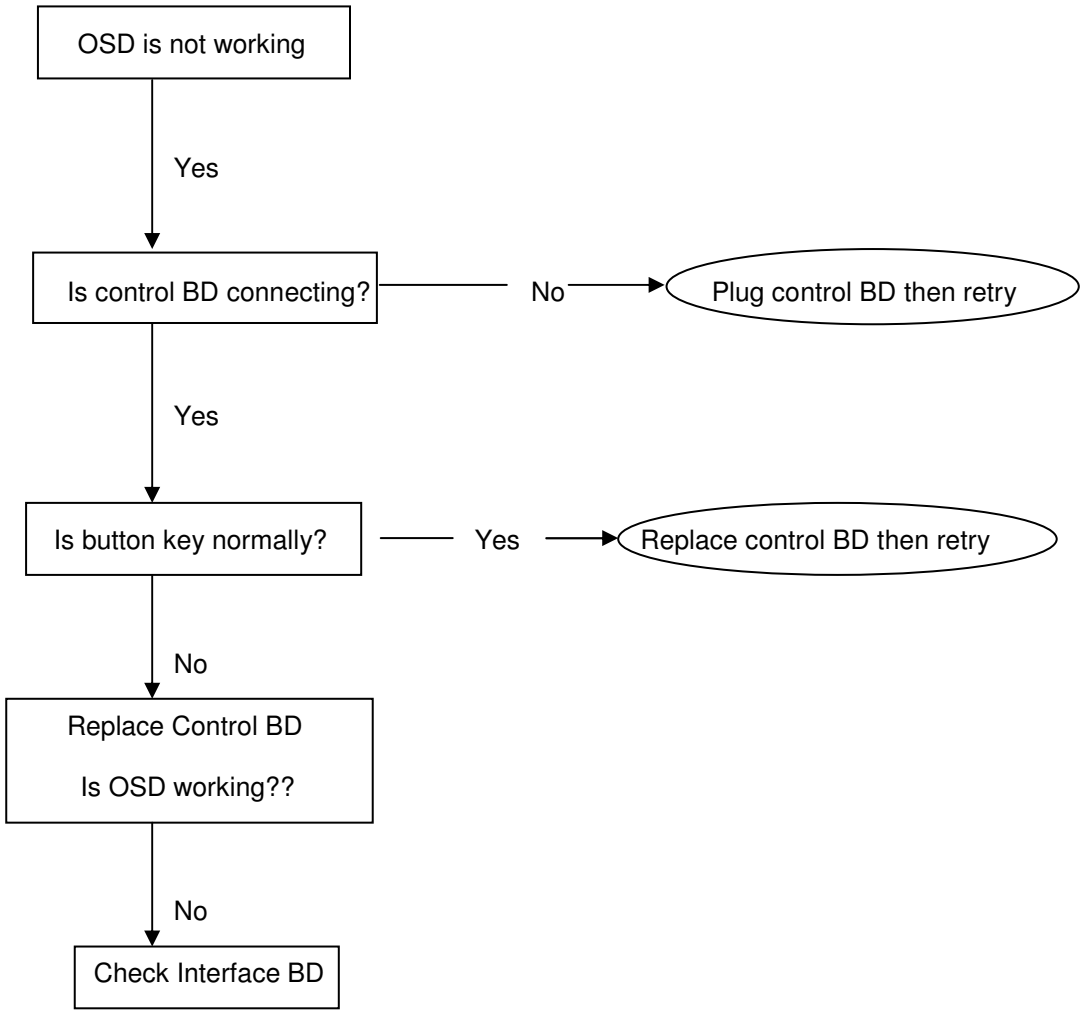
Another point to note: power off in factory mode does not exit from factory mode. You need to press the long key ⏻ for 3S before you exit from factory mode.

5. Troubleshooting

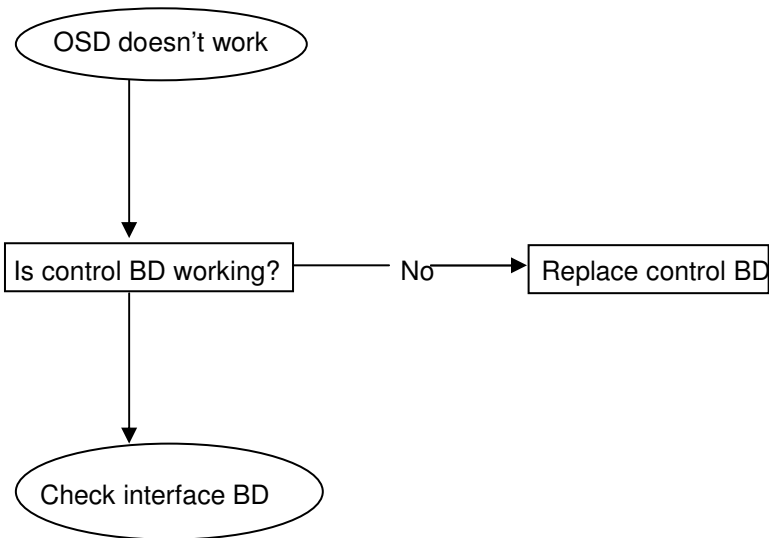
5.1 No Display or display is unstable on analog or digital port:



5.2 Button function



5.3 OSD function

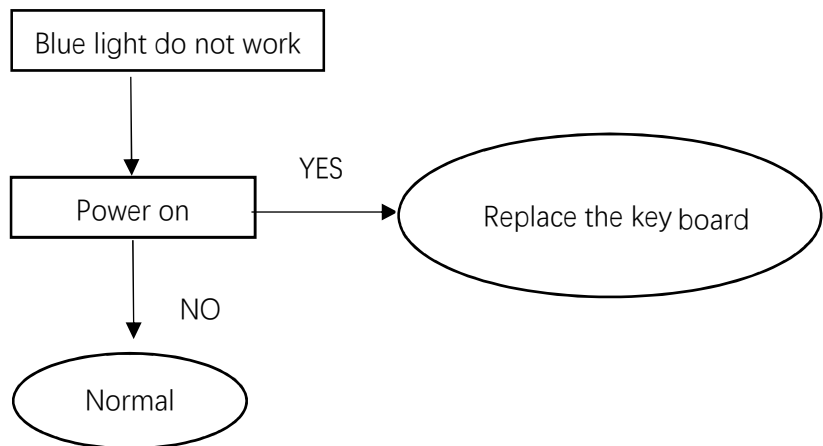
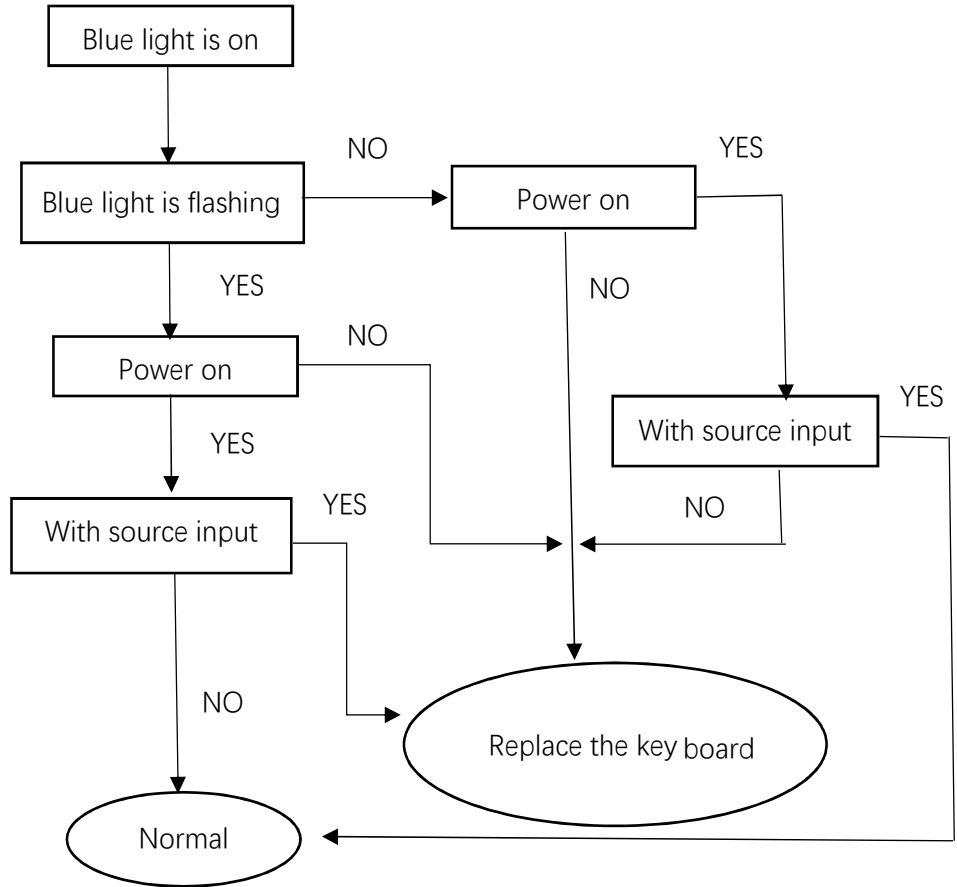


5.4 LED light

On: Blue light is always on

No Sigal: Blue light is flashing

Standby: Blue light do not work



CATEGORY	CATEGORY	ODM PART NO.	ACER DESCRIPTION	ODM DESCRIPTION	ACER PART NO.	UM.HQ1EE.001	
						H3-27M200D1-	X3-27M200D1-EUS0AU
LCD		S8-27M2000-LPBX2	LED LCD Panel TCL	PANEL MODULE LMF27	KL.2700T.015		
MAINBOARD		02-MART2522-AA19M	MAIN BOARD 1A2H	1A2H 2AMT-52AR-BH5	55.TKRMD.004		√
MAINBOARD		S8-MART2522-AA19M	MAIN BOARD 1A2H	1A2H 2AMT-52AR-BH53	55.TKRMD.001	√	
BOARD		81-PWE027-Y1235U	POWER BOARD	PSU / SOYYML191219 42W-3.5A	55.TKVMD.001		
BOARD		T8-24M20D1-FB1	FUNCTION KEY BOARD	ASSY - FRONT CONTROL BOARD	55.TKUMD.002		
CABLE		46-LB0400-04PSW8G	CABLE 2PIN 400MM - LIGHT BAR TO MAIN	WIRE L/B WIRE 400MM 2PIN SH PH 2MM UL103	50.TKVMD.001		
CABLE		46-DC0100-PP06S4	CABLE 6PIN 100MM - MAIN BOARD TO POWER BOARD	WIRE DC CONNECTING LINE 100MM 6PIN PHD	50.TKVMD.002		
CABLE		46-FM085L-05V03G	CABLE 5PIN 850MM - FUNCTION KEY BOARD TO MAIN BAORD	WIRE IR WIRE 850MM 5PIN PH(LOCK) GH 2.0/	50.TKVMD.003		
CABLE		46-FZ0468-30DA40G	FFC CABLE 30PIN 468MM - PANEL TO MAIN BOARD	WIRE FFC WIRE 468MM 30PIN FFC1.0 FI-E	50.TKVMD.004		
CABLE		41-HDM150-C19A1GB	HDMI CABLE 7.1MM 1500MM W/ MAGNET	WIRE 7.1MM 1500MM BLACK HDMI-19P HDMI-19 (magnet ring)	50.TM3MD.001		
CABLE		41-VGA150-C15UC1GB	VGA CABLE 1500MM	WIRE-BARE BARE WIRE 5.8MM 5-AW1386	50.TKPMD.001		
POWER CORD		51-FCB150-C3U07TPB	POWER CORD 1500MM EU	POWER CORD 1500MM 5-GPE0329 2 5-GPE0329	27.TKPMD.001		
CASE/COVER/BRA CKET ASSEMBLY		68-M77180-100Z1	BASE ASSY	RAW STAND BASE BK 00 00 00 27M2000A R=Y	60.TKRMD.001		
CASE/COVER/BRA CKET ASSEMBLY		68-M77180-000Z1	NECK ASSY	RAW STAND NECK BK 00 00 00 27M2000A R=Y	60.TKRMD.002		
CASE/COVER/BRA CKET ASSEMBLY		S8-771810-0HQZ1G	FRONT BEZEL ASSY	RAW FC(FRONT CABINET) WITH LOGO 27M2000A -- 00 00	60.TKVMD.003		
CASE/COVER/BRA CKET ASSEMBLY		56-772250-0HHZ1G	LIGHT-GUIDING PLATE	RAW LEN -- 00 00 00 R=Y	60.TKTMD.004		
CASE/COVER/BRA CKET ASSEMBLY		55-771780-1HQ6RG	BACK COVER ASSY	RAW BC(BACK CABINET) 27M2000A -	60.TKRMD.003		
CASE/COVER/BRA CKET ASSEMBLY		67-S77235-1G0	MAIN SHIELDING	RAW SHIELDING COVER -- 00 00 01	33.TKRMD.001		
CASE/COVER/BRA CKET ASSEMBLY		56-772240-0HA6RG	FUNCTION KEY BRACKET	RAW FUNCTION KEY HOLDER -- 00 00 00 R=Y	60.TKTMD.006		
CASE/COVER/BRA CKET ASSEMBLY		56-772280-0HA6RG	FUNCTION KEY PAD	RAW BUTTON -- 00 00 00 R=Y	60.TKTMD.007		